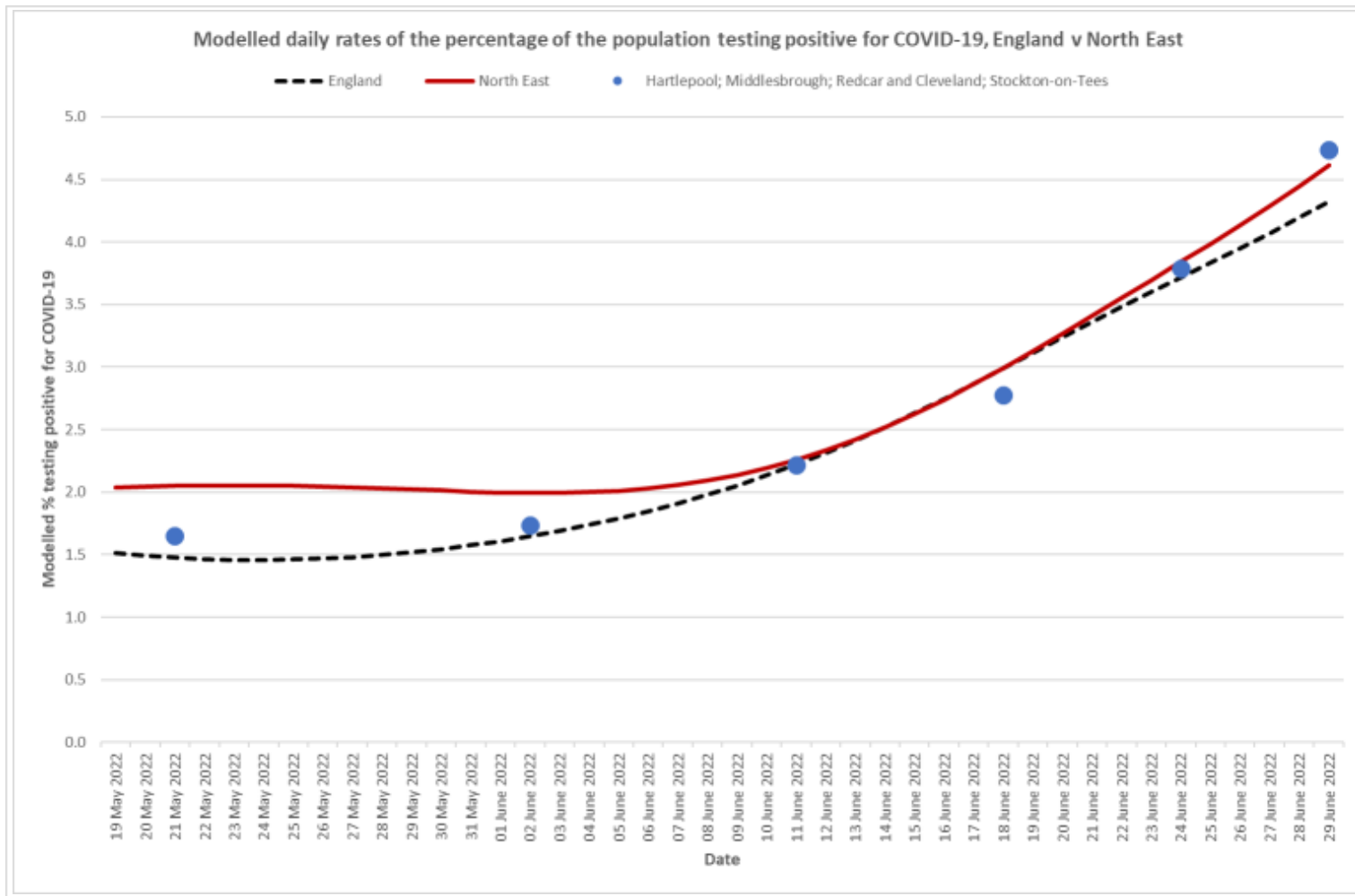


# Health Protection Collaborative update

Health & Wellbeing Board

27<sup>th</sup> July 2022

# Infection rates – ONS estimates



1 in 19 in  
England  
(15/07/22,  
UKHSA)

1 in 20 in UK,  
up from 1 in 25  
the week  
before

Likely now  
peaking  
(nationally) but  
always delayed  
impact on  
hospital figures

# Hospital activity

## Patients admitted

Latest 7 days  
57

Total  
5,211

## Patients in hospital

Latest available  
78

## Patients in ventilation beds

Latest available  
1

Activity continuing to increase

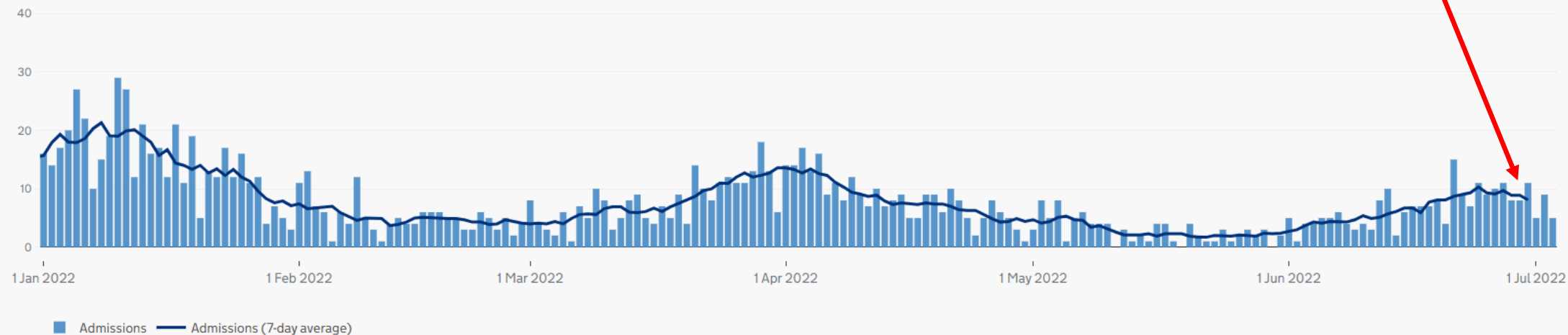
## Patients admitted to hospital

Daily and total numbers of COVID-19 patients admitted to hospital. Data are not updated every day by all 4 nations (England, Northern Ireland, Wales and Scotland). Figures are not comparable as Wales includes suspected COVID-19 patients while the other nations include only confirmed cases.

[Daily](#) [Total](#) [Data table](#) [About](#)

[all](#) [1y](#) [6m](#) [3m](#) [1m](#)

[Linear](#) [Log](#)



# Vaccinations

## People vaccinated

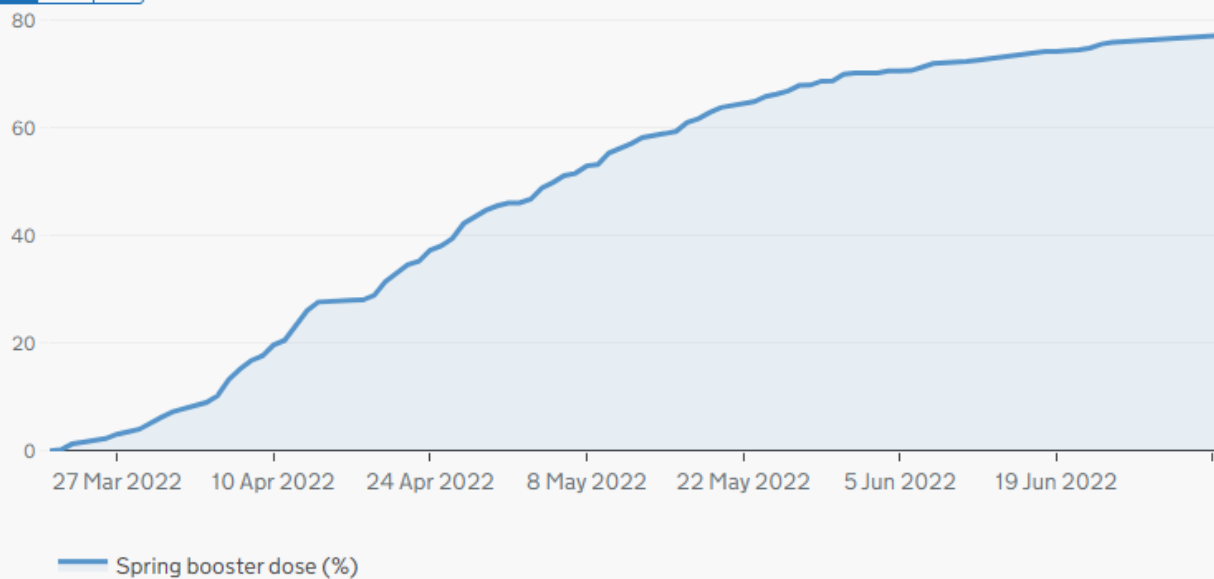
First dose total  
**152,590**

## Spring booster vaccination uptake (75+), by vaccination date

The percentage of people aged 75 and over who have received a spring booster COVID-19 vaccination. The denominator is the number of people aged 75 and over on the National Immunisation Management Service (NIMS) database.

[Chart](#) [Data table](#) [About](#)

**all** 3m 1m



## Vaccinations given

# Deaths

## Deaths within 28 days of positive test

Total  
**627**

## Deaths with COVID-19 on the death certificate

Weekly  
**1**

Total  
**639**

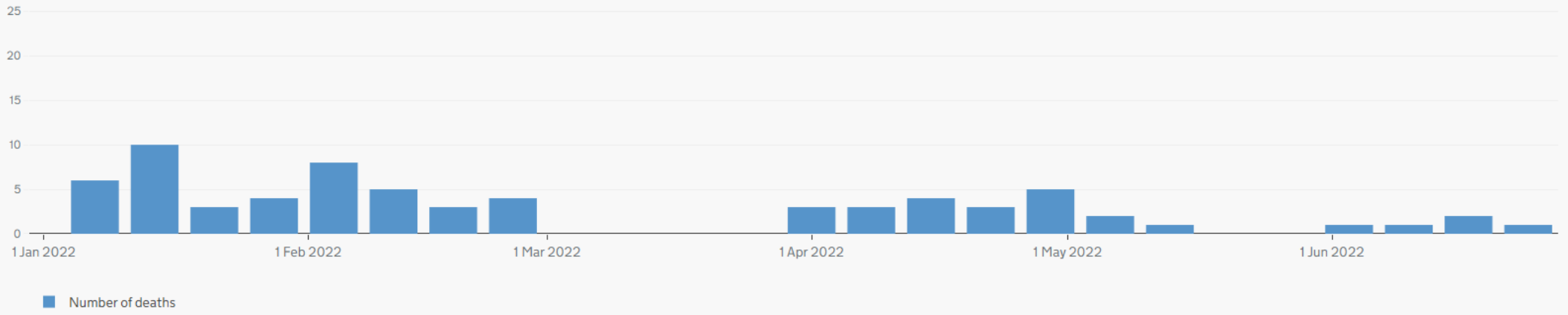
### Weekly deaths with COVID-19 on the death certificate by date registered

Weekly number of deaths of people whose death certificate mentioned COVID-19 as one of the causes. The data are published weekly. Data are shown by the date the death was registered.

[Weekly](#) [Data table](#) [About](#)

[all](#) [1y](#) [6m](#) [3m](#) [1m](#)

[Linear](#) [Log](#)



# Care Homes

- Increase in care home outbreaks in recent weeks.
- UKHSA Health Protection Team continuing to lead on initial response to Covid cases. Ongoing local support to homes through multi-agency Social Care Operational Group
- National protective guidance including staff testing remains in place
- Ongoing work to maintain IPC support

# Vaccination

- Mass Vaccination sites including Middlesbrough and Darlington stepped down at end of June. Bookable appts will continue to be available through National Booking System and delivered through Primary Care.
- A regional outreach team has been retained to assist with targeted work in communities until September, recognising the work on vaccine inequalities to date.
- Summer walk in clinics at Wellington Square provided through HaSH and the regional outreach team
- Continued local focus on inequalities - targeted clinics planned (most recently for homeless population) and ongoing engagement sessions
- Full guidance on Autumn booster and roll out awaited - co-delivery with flu likely. Offer to:
  - Health & social care staff
  - Everyone aged 50 and over
  - Carers >16yrs old
  - >5s whose health puts them at greater risk, including pregnant women
  - >5s who share a house with someone with weakened immune system

# Long-term forecasting

## (Independent SAGE)

- Evidence (Australia, July 2022): can become reinfected within 28 days of prior infection
- Next peak anticipated late **October 2022, then again December?**
- BUT significant uncertainty, doesn't factor in variants or flu
- Current estimates of vaccination efficacy:
  - preventing fatality when seriously ill **93.6%** (CI 93.1 to 94.1)
  - preventing serious illness when symptomatic (**age 15-34**) **76.4%** (CI 75.7 to 77.0)
  - preventing serious illness when symptomatic (**age 35-70**) **63.5%** (CI 62.5 to 64.4)
- Vaccine remains key tool & ongoing development continues - ?sufficient to manage Winter pressures / impact on key infrastructure



# Covid Lessons Learnt Project

- A planned programme of work to ensure actions taken during the Covid response are recorded and captured. To establish and record the following:
  - the scope of the work undertaken;
  - key processes and ongoing work;
  - a common understanding of lessons learnt.
- To inform any future phases of Covid response (scenario testing & action planning to be undertaken), and any future pandemic or other public health emergency
- Seeking learning and experiences from those involved at all levels of the response across these key themes
- Due to report back to next HPC meeting with focused discussion together with Emergency Planning Unit (September)

# Covid and Winter Response – Looking ahead

Scale of any future local Covid response is unclear so flexibility and resilience at local level is key:

- Implementation/retention of lesson learnt/legacy policies and procedures / Links to refresh of Major Incident Plan
- Review and enhance Prevention Plans for key settings, ensure established engagement mechanisms are maintained with key settings
- Discussions and influence and within NHS ICS planning
- Ongoing support multi-agency work on vaccine inequalities, support development of outreach approaches, maximise opportunities related to Autumn booster and flu vaccine delivery.
- Scoping of local IPC capacity and support to care sector (including non-care home settings) and other key settings

## Resources

- Retained some local response capability for Autumn / Winter and maintaining multi-agency working
- Established community relationships (including Covid Champions retained as Wellbeing Champions)

# Key messages remain

Key messages remain, reflecting national guidance:

- Hand & respiratory hygiene, ventilation
- Stay at home if symptoms whenever possible (& stay away from vulnerable)
- Vaccine including booster – and can protect against post-Covid syndrome (Long Covid)
- Will help with keeping people well, keeping them in work, protecting the more vulnerable and protecting against long-term impacts